

## Router Reset Instructions

1. Reset the router by unplugging and reconnecting the small round black cable at the back of the Linksys device fails to correct the connection issue then:

Open Browser and type in IP# from information sheet left in my docs called router info...  
E.g. 192.168.5.1 and push enter or go button.

COMPUTER SALES/LEASING, SERVICE, SUPPLIES and SUPPORT

# COM-TEKK COMPUTERS

3091 Mosley Street  
Wasaga Beach, ON  
705-429-2192

Monday Oct. 30, 2006 "The On-Site Service Guys"

- HOME
- COMPUTER SERVICES
- COMPUTER SALES
- CUSTOMER SUPPORT
- HP SUPPLIES LINK
- RE-CERTIFIED SYSTEMS
- ABOUT US

**Proud Supporter of**


**TOYS FOR KIDS**  
Wasaga Beach Kinetic Club

Com-Tekk Computers Inc is proud to support Toys for Kids.

**PRINTER SUPPLIES**

Laser Toner  
INK CARTRIDGES

### We Specialize in On-Site Sales Service And Support




© Com-Tekk Computers Inc

Com-Tekk Computers Inc. is a full range sales and service business established in 1996.

Purchase a new computer system or notebook, upgrade an existing system, safely back up a hard drive or drop by for those simple everyday needs like printer supplies.

Whatever the make or model, Com-Tekk has the products and support

### Edifier Speaker Systems




Quality Sound Systems

GO WOW!

GO EDIFIER!

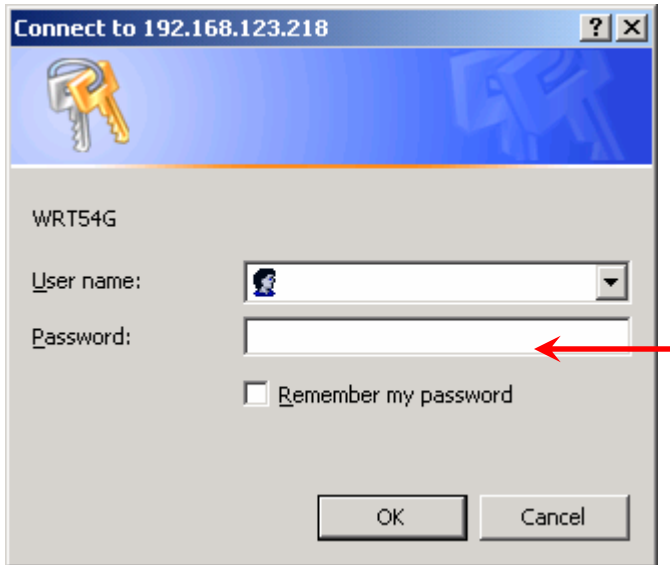
[Check out this link.](#)

### Spy Ware Info



If your computer starts to behave strangely you may have spyware or other unwanted software installed on your computer

Type in Password listed on info sheet as there is no User name.



Connect to 192.168.123.218

WRT54G

User name:

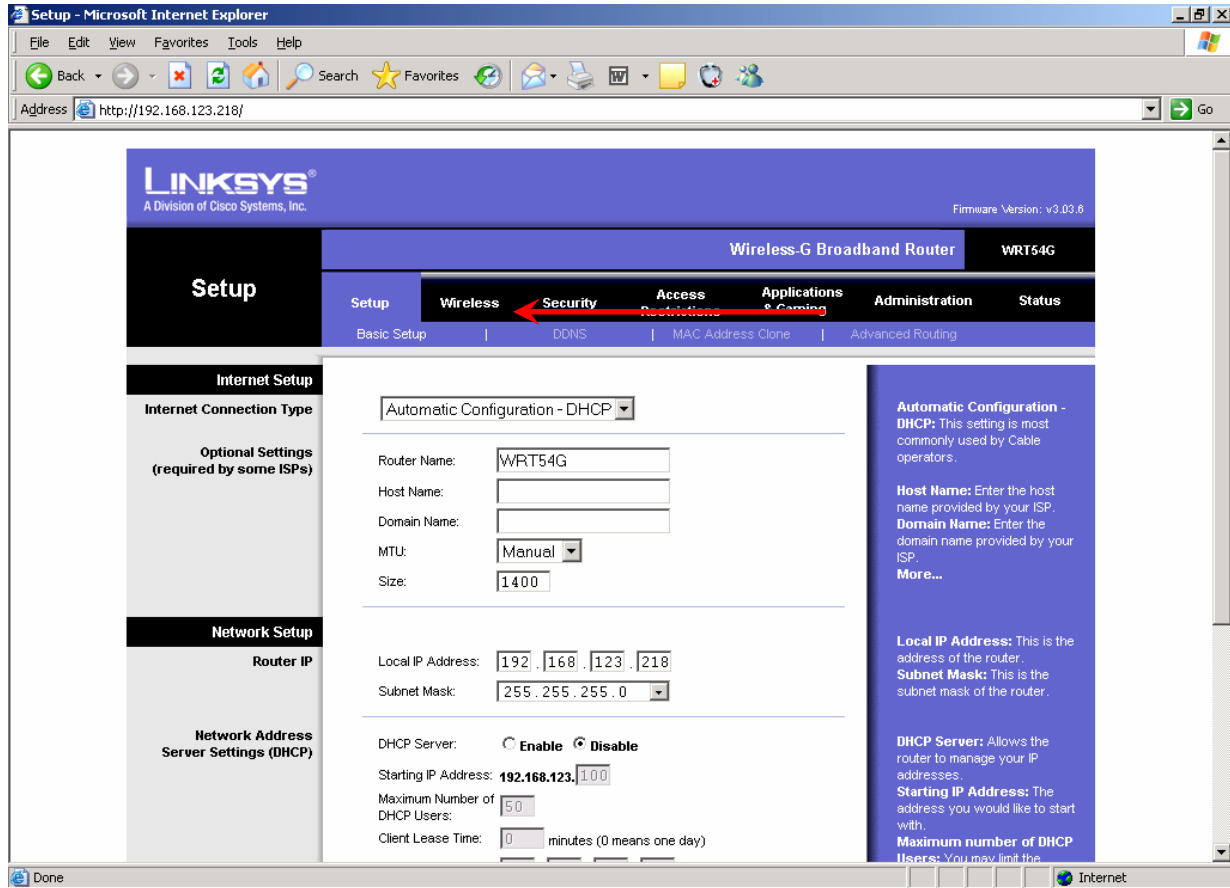
Password:  ←

Remember my password

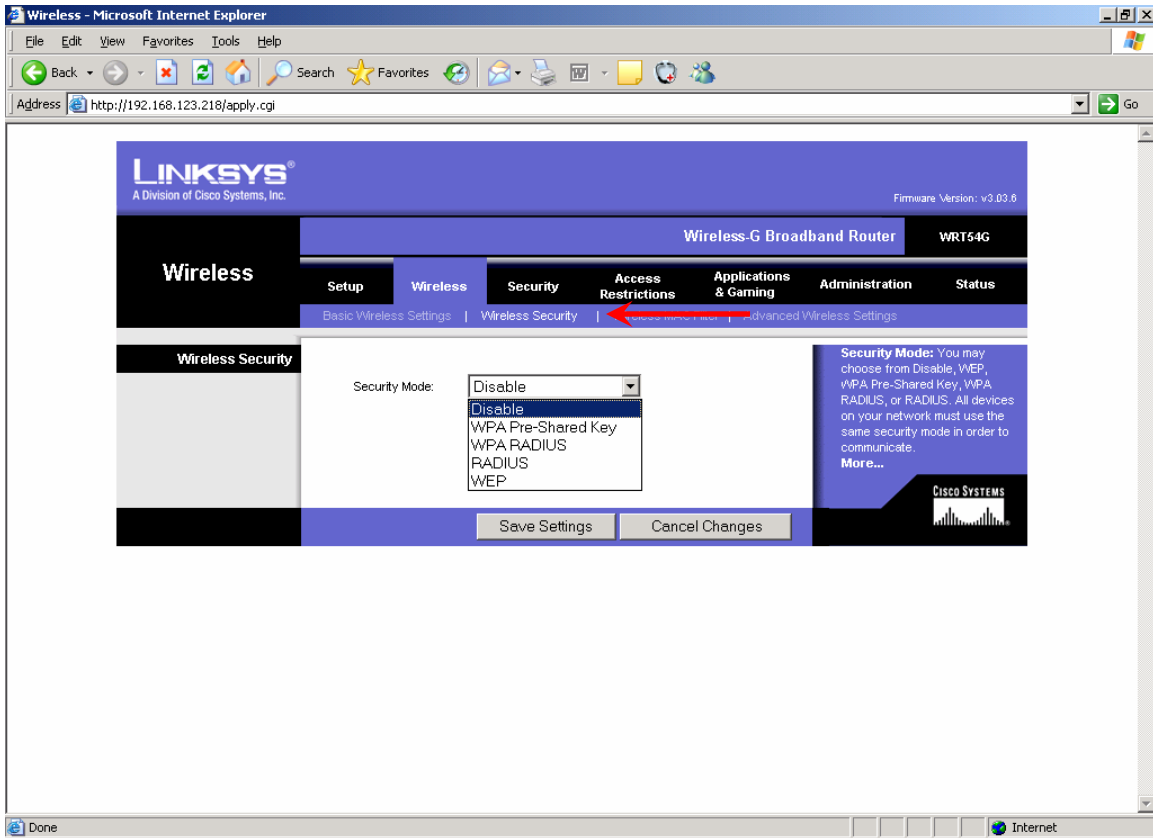
OK Cancel

Once in router webpage,

2. Press wireless tab at the top of the screen.



3. Press wireless security and make sure the correct encryption type listed on info sheet matches what is listed in wireless software on the computer...



4. Write down either key 1 or the key you see and type it into wireless software on the computer with the problem making sure no mistakes have been keyed. **DO NOT TYPE IN LINKSYS DEVICE.** The wireless should connect, if not disable the security mode by clicking on the arrow by security mode and choose disable.

Note: if using WPA encryption, special characters and capitals make a difference, also oh's are not used zeros are.

